



**My commute.
My comfort.
My time.**

Cross-border, affordable mobility between
Koblenz, Trier and Luxembourg



www.tour-delux.info

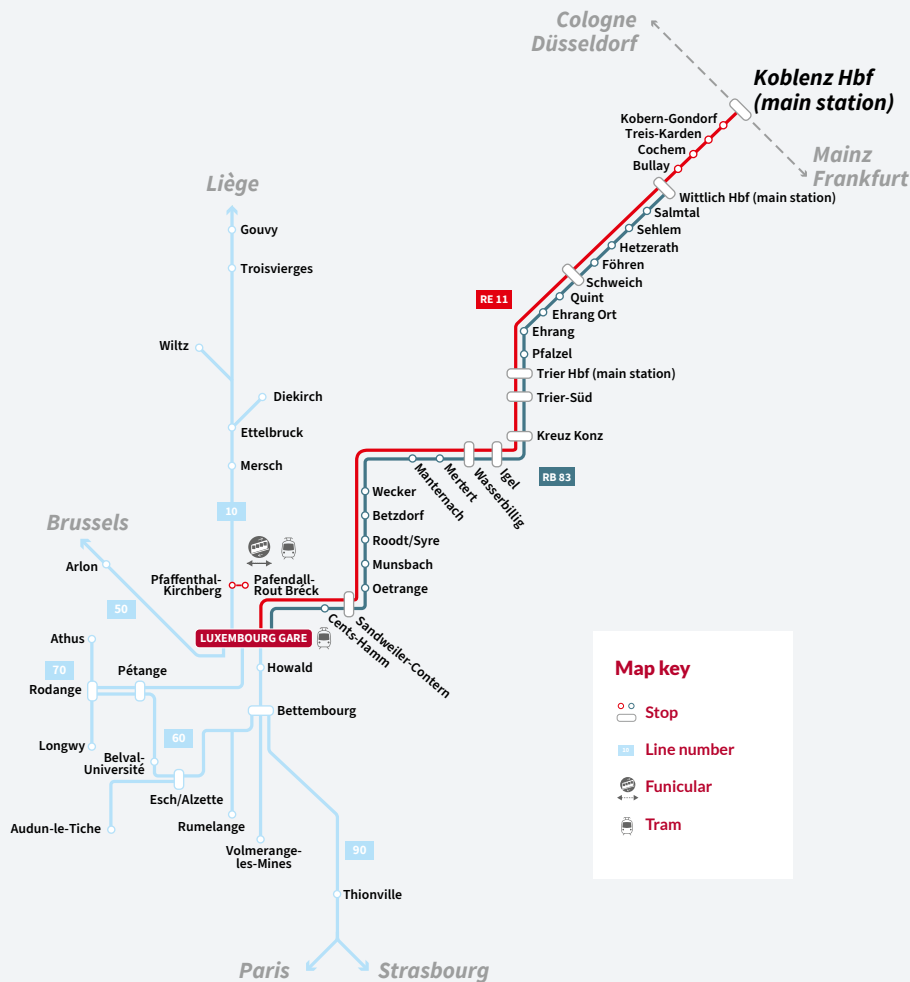
Enjoy cross border mobility on the route Koblenz – Trier – Luxembourg

Cross-border rail services between Germany and Luxembourg mean you can enjoy relaxed commuting to work and back home again! Commuters benefit from an attractive transport service as well as affordable tickets and fares. And, from 1 May 2023, the new Deutschland Ticket*. Best of all: you can travel to all your destinations in comfort.

Relaxed commuting!

Enjoy reliable travel to your workplace on modern, comfortable trains. You will benefit in many ways from switching to local public transport: You will not only be travelling in an environmentally-friendly and sustainable way but also in a zero-stress, convenient way. You don't have to worry about traffic jams or looking for a parking space. Our affordable tickets and fares are also not affected by the high fuel prices!

*More info at www.vrt-info.de/tickets/deutschlandticket



Attractive mobility services between Germany and Luxembourg

The cross-border rail passenger service will bring you safely to your leisure destinations on regional rail route RB 83 and regional express route RE11. Cross-border RGTR bus services between Germany and Luxembourg expand your mobility options.

Your train connections: RB 83 and RE 11

RB 83 Hourly direct connection from Wittlich to Luxembourg*:
Monday to Saturday, from 5 am to 9 pm
From Luxembourg to Wittlich:
Monday to Saturday, from 6 am to 9 pm

RE 11 Hourly direct connection between Koblenz, Trier and Luxembourg:
Daily, from 6 am to 11 pm
From Luxembourg to Trier and Koblenz:
Daily, from 5 am to 11 pm

* Stops at all railway stations on the German and Luxembourg sides, except Karthaus



Find your train connections at
www.cfl.lu and www.bahn.de

Your bus connections: RGTR buses routes

You can also travel conveniently between Germany and Luxembourg using the cross-border RGTR bus routes. Take advantage of the preferential rate for RegioZone tickets. On cross-border RGTR buses, free travel applies within Luxembourg to the last stop before the border or to the border, if there is a bus stop there.

Local public transport is free in Luxembourg!

You can travel for free in Luxembourg and the ticket price for train and bus travel is only charged up to the Luxembourg border! You can use all public transport and 2nd class local trains in the region of the Grand Duchy of Luxembourg for free. Tickets must still be purchased for 1st class. Prices for 1st class season tickets remain unchanged.



Find your bus connections at
www.mobilitet.lu

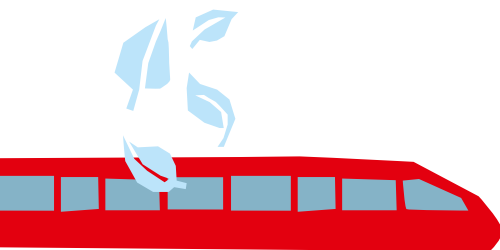


OekoCard – a good choice for commuters

For the Wittlich – Trier – Luxembourg route

The OekoCard is valid on trains on the cross-border route Wittlich – Trier – Luxembourg and on all public buses and trains in Luxembourg. To qualify for the personal season ticket, German residents need to present a certificate from their employer in Luxembourg*.

The OekoCard customer card, which is valid for one year and is to be shown at ticket control, can be obtained in DB Travel Centres or from CFL in Luxembourg Station. Luxembourg residents must simply show an official Luxembourg identification document to purchase the OekoCard.



*Download certificate from
www.cfl.lu or www.vrt-info.de

New from 1 May 23: the Deutschland Ticket

The flat rate for all regional transport

Bus and train travel is now even easier and more affordable with the Deutschland Ticket (D-Ticket). For just €49 a month you can travel anywhere in Germany on regional and local transport (2nd class), including across different states and tariff zones. And of course, you can also cross the border into Luxembourg on the D-Ticket. If you don't need this personalised subscription-based ticket permanently, you can simply cancel on a monthly basis. Choose whatever suits your individual travel needs best.

The digital subscription is available via the DB Navigator app, the DB Streckenagent app, at bahn.de and in all DB travel centres.

For detailed information, and terms and conditions, go to www.bahn.de/deutschlandticket



Luxembourg Special Day Return Ticket

Are you based in Trier but have occasional appointments in Luxembourg? Then the Luxembourg Special is the ticket for you: It is valid for inbound and outbound travel on local trains (RE, RB) from Trier main station (Hbf) to Luxembourg via the border crossing at Igel.

Rhineland-Palatinate Ticket + Lux

The Rhineland-Palatinate Ticket + Lux is valid for one day for up to five people travelling together in Rhineland-Palatinate (Rheinland-Pfalz) and Saarland on cross-border rail passenger services and on transport association public transport in Rhineland-Palatinate (bus, tram) and Luxembourg.

Cross-border bus tickets

RegioZone tickets are available as daily tickets and season tickets at two fare levels: **RegioZone 1** for all cross-border RGTR buses and Line 410 (except for the Line 405 stops in Dillingen and Saarlouis and Line L40 Saarbrücken-Express) and **RegioZone 2** for the Line 405 stops in Dillingen and Saarlouis and Line L40 Saarbrücken-Express.

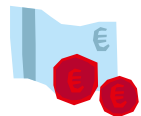
You can find more information at mobiliteit.lu

3 reasons to get on board now!



Sustainable bus and rail travel

Travel with us and help save the planet. Per person and per kilometre, travelling by bus and rail releases significantly less greenhouse gases than travelling by car. Car travel emits around five times more CO₂ and plane travel emits over seven times more. And if you take your bike with you, you can continue your journey in an environmentally friendly way.



Leave your car at home and save money

Avoid high fuel costs and parking charges by leaving your car at home more often. If you stop using your car entirely and switch to bus and train, you can also save a lot of money on running costs.



Lean back and relax instead of driving

Enjoy the view out of the window or use this extra time to read or to check your emails. You don't need to worry whether you still have enough energy to drive home after a long day at work, how long you'll be stuck in traffic or what unforeseeable traffic conditions you may encounter. This allows you to relax and reduces traffic in town centres!



Bring your bicycle with you*

You can take your bicycle with you free of charge in Luxembourg and there are no time restrictions. The following rule applies to your cross-border journey (on the German side): from Monday to Friday from 9 am and on Saturdays, Sundays and bank holidays, you can take your bicycle with you free of charge; from Monday to Friday before 9 am, you need to get a bike ticket for local transport.

***Please note:** It is generally only possible to take your bicycle with you where capacity permits this.

Publisher



CFL
9, Place de la Gare
L-1616 Luxembourg
www.cfl.lu



DB Regio AG
Region Mitte
Am Victoria-Turm 2
D-68163 Mannheim
www.bahn.de



Zweckverband
SchienenPersonenNahverkehr
Rheinland-Pfalz Nord
Friedrich-Ebert-Ring 14 – 20
D-56068 Koblenz
www.spnv-nord.de

Do you have questions?

For questions and suggestions as well as information on timetables and fares, please call:



+ 352 2489 2489
+ 49 3022 38 54 21

*(20 cents/call from a landline,
mobile tariff
max. 60 cents/call)*
www.cfl.lu



01806 13 16 19

*(20 cents/call from a German landline,
other fares from mobile networks
max. 60 cents/call)*
www.vrt-info.de



+49 30 2970
www.bahn.de



Mobilität für Rheinland-Pfalz

Discover more mobility.
Now at rolph.de