

Leisure

Ticket tips plus
cycling and
hiking trips



My commute. My experience. My trip.

Cheap and convenient travel **between
Koblenz, Trier and Luxembourg**



www.tour-delux.info

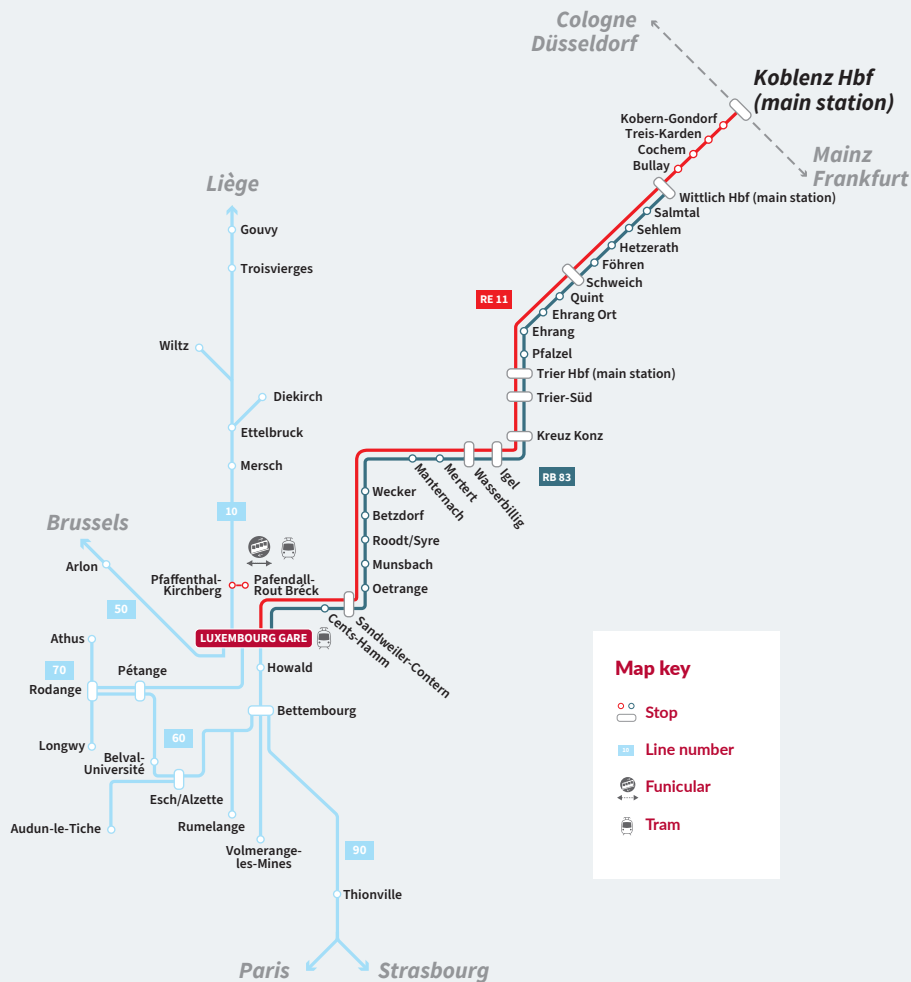
Cross-border mobility between Koblenz, Trier and Luxembourg

Cross-border railway local public transport between Germany and Luxembourg is all about relaxing and enjoying your free time! You will benefit from an attractive transport service as well as affordable tickets and tariffs. As of 1 May 2023, the new Deutschland Ticket is also available digitally from lots of organisations and travel companies in Germany, for example from the Verkehrsverbund Region Trier via the relevant app, [VRT-Fahrplan](https://www.vrt-fahrplan.de). *

Enjoy adventures in your free time

Why not enjoy cross-border leisure travel between Koblenz, Trier and Luxembourg! Modern and comfortable trains will get you to a range of destinations, attractions and activities in a convenient way. We'll take you with us on cycling and hiking trips in Luxembourg this season. And the best bit is that the CFL trips run from railway station to railway station. You simply arrive, enjoy the views in Luxembourg and then travel home again conveniently. We hope you have a great time!

* More info at www.vrt-info.de/tickets/deutschlandticket



Attractive mobility services between Germany and Luxembourg

The cross-border rail passenger service will bring you safely to your leisure destinations on regional rail route RB 83 and regional express route RE11. Cross-border RGTR bus services between Germany and Luxembourg expand your mobility options.

Your train connections: RB 83 and RE 11

RB 83 Hourly direct connection from Wittlich to Luxembourg*:
Monday to Saturday, from 5 am to 9 pm

From Luxembourg to Wittlich:
Monday to Saturday, from 6 am to 9 pm

RE 11 Hourly direct connection between Koblenz, Trier and Luxembourg:
Daily, from 6 am to 11 pm

From Luxembourg to Trier and Koblenz:
Daily, from 5 am to 11 pm

* Stops at all railway stations on the German and Luxembourg sides, except Karthaus



Find your train connections at
www.cfl.lu and www.bahn.de

Your bus connections: RGTR buses routes

You can also travel conveniently between Germany and Luxembourg using the cross-border RGTR bus routes. Take advantage of the preferential rate for RegioZone tickets. On cross-border RGTR buses, free travel applies within Luxembourg to the last stop before the border or to the border, if there is a bus stop there.

Local public transport is free in Luxembourg!

You can travel for free in Luxembourg and the ticket price for train and bus travel is only charged up to the Luxembourg border! You can use all public transport and 2nd class local trains in the region of the Grand Duchy of Luxembourg for free. Tickets must still be purchased for 1st class. Prices for 1st class season tickets remain unchanged.



Find your bus connections at
www.mobiliteit.lu



Let's go cycling and hiking

To make sure you enjoy your free time to the fullest, we recommend selected cycling and hiking trips in Luxembourg and Germany. Put your cycling kit or your hiking boots on and get going on some great trips from railway station to railway station. You can also travel with your bicycle for free in Luxembourg.

Our destinations in Luxembourg



CFL Tour G: Ettelbrück – Echternach – Wasserbillig

On this varied cycling trip, you will get to experience the Sauer Valley, Luxembourg's Little Switzerland and 'La piste cyclable des Trois Rivières'.

[More details](#)



CFL Tour J: Luxembourg – Echternach – Wasserbillig

Starting from Kirchberg, you'll travel along the national cycle path PC2 'Piste cyclable d'Echternach' and the cycle path PC3 'Piste cyclable des Trois Rivières'. [More details](#)



CFL Tour K: Luxembourg – Betzdorf – Wasserbillig

From the PC2, things will get more challenging on the PC4 'Piste cyclable de la Syre', which features gorgeous panoramic views. You can get to your destination via the PC3 in the Moselle Valley.

[More details](#)



CFL Tour L: Luxembourg – Remich – Wasserbillig

On the PC1 'Piste cyclable du Centre', you'll cycle through the Alzette Valley and then continue on the VeloRoute SaarLorLux, the PC7 and PC3.

[More details](#)



CFL hiking trail 37: Luxembourg – Sandweiler-Contern

Follow a romantic route through the Grund district into the green Alzette Valley and then reach the new Sandweiler-Contern after hiking through the forest.

[More details](#)



CFL hiking trail 38: Sandweiler-Contern – Munsbach

This varied and family-friendly route near the airport connects several residential districts to the east of the capital with each other.

[More details](#)



CFL hiking trail 39: Munsbach – Oetrange

Hike through meadows and fields in the Syr Valley with some of the route travelling along the ancient Kiem Roman road. You can bring a buggy on this trail with you.

[More details](#)



CFL hiking trail 40: Roodt-Syre – Betzdorf

Experience the 360° panoramic views in the Haard, a beautiful landscape filled with meadows, fields and farms in Olingen.

[More details](#)



CFL hiking trail 41: Munsbach – Manternach

Forests, open and varied landscapes, vineyards and the historic town of Grevenmacher are just some of the sights that you'll see between Syr and Moselle.

[More details](#)



CFL hiking trail 42: Betzdorf – Manternach

After a short, steep climb, you'll hike from the community of Berg through vast agricultural landscapes and two forested areas.

[More details](#)



CFL hiking trail 43: Manternach – Wasserbillig

The route guides you through the lower Syr Valley and then along the Moselle River, including the 'Traumschleife Manternacher Fiels' circular trail and 'Pierre Moes' educational trail.

[More details](#)

Our destinations in Germany



Tatzelwurm Trail in Koblenz-Gondorf

Half lion, half lindworm: This hike to the Tatzelwurm Cave is steeped in cultural history and will bring you closer to the mythical creature, the Tatzelwurm.

[More details](#)



Explore the Moselsteig Trail to Eltz Castle

At the peak of the Moselsteig section 20 from Treis-Karden to Moselkern, you will be able to enjoy views of the picturesque Castle Eltz in the enchanted Elzbach Valley. [More details](#)



'Moselsteig Seitensprung Cochemer Ritterrunde' Side Trail

This challenging route will reward you with views from the Pinnerkreuz and Hubertushöhe viewpoints, Cochem Imperial Castle and the Winneburg castle ruins, for example. [More details](#)



Wine educational trail 'Bullay' to 'Uncle Tom's Hut'

You'll stroll through the Brautrock wine growing region and continue on up to the wine tavern 'Uncle Tom's Hut', learning about wine from 16 information boards. [More details](#)



Mill trail 'Mühlen an Lieser und Salm'

In 2 day stages, you will master the 'Eifelsteig' experience trail. Marvel at the nature, the Himmerod Cistercian abbey and 11 historic water mills.

[More details](#)



Moselsteig Stage 4: Konz – Trier

Hike in the footsteps of the Romans, starting in Konz, briefly stopping off at the UNESCO World Cultural Heritage Site of the Igel Column and continuing to Germany's oldest town.

[More details](#)



From Deutsches Eck to Bopparder Schleife

On this circular route, which starts and finishes in Koblenz, you'll cycle in the World Cultural Heritage valley along the Rhine to Boppard, where you'll hop on board the ferry.

[More details](#)



Mosel Bicycle Route Stage 8: From Bullay to Cochem

On the left bank of the Moselle, you'll pass idyllic wine growing areas, such as Bremm with its winding streets, and go past Europe's steepest vineyard.

[More details](#)



Wittlich Basin between Schweich and Wittlich

Enjoy panoramic views from your bike in the slightly hilly landscape of the Wittlich Basin, featuring meadows, fields and beautiful settlements.

[More details](#)



Star route around Trier: Route 3

On this circular route, you'll pedal along the Moselle and Saar cycle route: from Trier, you'll head to Saarburg and back via Konz and Kanzem.

[More details](#)



248 km Moselle cycle route between Perl and Koblenz

Destined for one-day routes that really pack a punch, this route features romantic wine-growing villages, world-famous vineyards and imposing castles.

[More details](#)



Practical tips for your travels

Plan your cycling and hiking trips like a pro! CFL offers you a GPX file to download for lots of routes, which you can then integrate into a navigation application of your choice.

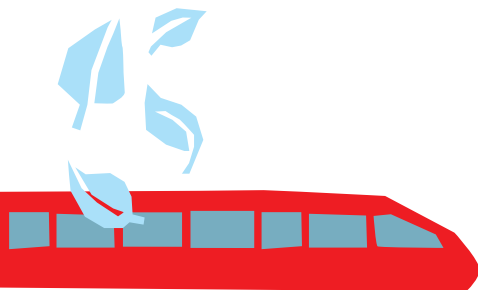


Luxembourg Special

This day return ticket is valid for inbound and outbound travel on local trains (RE, RB) from Trier main station (Hbf) to Luxembourg via the border crossing at Igel. Prices for adults are € 5.60 for 2nd class and € 11.60 for 1st class. Children between 6 und 11 years only pay € 2.60 for 2nd class, € 5.60 for 1st class.

Rhineland-Palatinate Ticket + Lux

This day ticket for up to five people is valid in Rhineland-Palatinate (Rheinland-Pfalz) and Saarland on cross-border rail passenger services and on transport association public transport in Rhineland-Palatinate (bus, tram) and Luxembourg. The cost is €26 for 1 person with each additional traveller paying an extra €6.



Cross-border bus tickets

For cross-border RGTR buses, there are two zones and two tariffs:

A day ticket for **RegioZone 1** costs €5.

If you travel in **RegioZone 2**, you'll pay €9 a day.

You can find more information on the zones at mobilität.lu



Tip for commuters: OekoCard

The OekoCard is valid on trains on the cross-border route Wittlich – Trier – Luxembourg and on all public buses and trains in Luxembourg.



You can find out more about the Oeko-Card at www.tour-delux.info

49 €

New from 1 May 23: the Deutschland Ticket

The flat rate for all regional transport

Bus and train travel is now even easier and more affordable with the Deutschland Ticket (D-Ticket). For just €49 a month you can travel anywhere in Germany on regional and local transport (2nd class), including across different states and tariff zones. And of course, you can also cross the border into Luxembourg on the D-Ticket. If you don't need this personalised subscription-based ticket permanently, you can simply cancel on a monthly basis. Choose whatever suits your individual travel needs best.

The digital subscription is available via the DB Navigator app, the DB Streckenagent app, at bahn.de and in all DB travel centres.

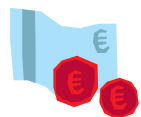
For detailed information, and terms and conditions, go to www.bahn.de/deutschlandticket

3 reasons to get on board now!



Sustainable bus and rail travel

Travel with us and help save the planet. Per person and per kilometre, travelling by bus and rail releases significantly less greenhouse gases than travelling by car. Car travel emits around five times more CO₂ and plane travel emits over seven times more. And if you take your bike with you, you can continue your journey in an environmentally friendly way.



Leave your car at home and save money

Avoid high fuel costs and parking charges by leaving your car at home more often. If you stop using your car entirely and switch to bus and train, you can also save a lot of money on running costs.



Lean back and relax instead of driving

Enjoy the view out of the window or use this extra time to read or to check your emails. You don't need to worry whether you still have enough energy to drive home after a long day at work, how long you'll be stuck in traffic or what unforeseeable traffic conditions you may encounter. This allows you to relax and reduces traffic in town centres!



Bring your bicycle with you*

You can take your bicycle with you free of charge in Luxembourg and there are no time restrictions. The following rule applies to your cross-border journey (on the German side): from Monday to Friday from 9 am and on Saturdays, Sundays and bank holidays, you can take your bicycle with you free of charge; from Monday to Friday before 9 am, you need to get a bike ticket for local transport.

***Please note:** It is generally only possible to take your bicycle with you where capacity permits this.

Publisher



CFL
9, Place de la Gare
L-1616 Luxembourg
www.cfl.lu



DB Regio AG
Region Mitte
Am Victoria-Turm 2
D-68163 Mannheim
www.bahn.de



Zweckverband
SchienenPersonenNahverkehr
Rheinland-Pfalz Nord
Friedrich-Ebert-Ring 14 – 20
D-56068 Koblenz
www.spnv-nord.de

Do you have questions?

For questions and suggestions as well as information on timetables and tariffs, please call:



+ 352 2489 2489
+ 49 3022 38 54 21

(20 cents/call from a landline, mobile
tariff max. 60 cents/call)
www.cfl.lu



01806 13 16 19

(20 cents/call from a German
landline, other tariffs from mobile
networks max. 60 cents/call)
www.vrt-info.de



+49 30 2970
www.bahn.de



Mobilität für Rheinland-Pfalz

Discover more mobility.
Now at rolph.de